



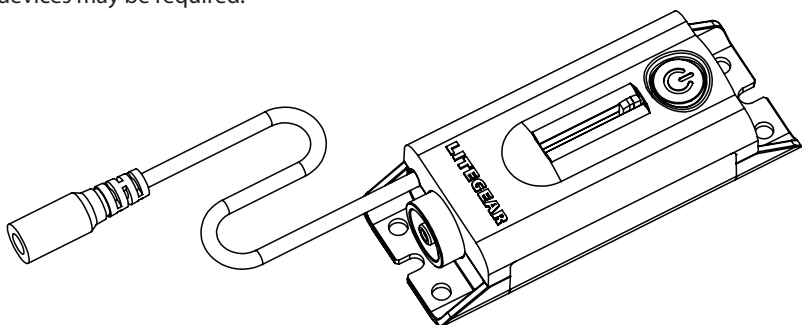
LITEDIMMER™ EFX

MICRO SINGLE

PAPARAZZI

About LiteDimmer Micro Single EFX Paparazzi

LiteDimmer Micro Single EFX Paparazzi is one of our handheld LED effects dimmers. As the most basic of LiteGear's EFX LiteDimmers, it is lightweight and travel-friendly, making it perfect for situations requiring small amounts of single-color LiteRibbon® or simply for those on a budget, providing a realistic paparazzi effect to any job. Its simple yet powerful approach to controlling brightness maintains LiteGear's standard of performance and quality while allowing the kind of flexibility demanded from lighting professionals. LiteDimmer Micro Single EFX Paparazzi is designed for use with LiteGear™ LEDs that incorporate current limiting. LiteDimmer Micro Single EFX Paparazzi is not designed to limit current. Additional devices may be required.



Power Supply Options

LiteDimmer Micro Single EFX Paparazzi is capable of operating with DC voltages between 9VDC to 24VDC only. It will not increase or decrease input voltage. You must provide voltage that is compatible with the power requirements of LiteRibbon. For best results, use LiteDimmer Micro Single EFX Paparazzi with LiteGear LED products.

Note: Power supply voltage must match the rating of the LiteRibbon, LiteMat, or LiteTile you are using, or damage may occur.

Controls

The dimmer is equipped with a fader and a slightly recessed "Power" button.

Connections

LiteDimmer Micro Single EFX Paparazzi is equipped with two 2.1 mm x 5.5 mm Barrel connectors; one is used for input power (male) while the other is for output to the LEDs (female). Barrel polarity is positive (+) in the center, surrounded by a negative (-) shroud.

Safety and Maintenance

Before operation, inspect the cables and enclosure for any damage. Also, inspect the installation for short circuits, damage, water, or similar.

Operation

Start:

- 1) To install LiteDimmer Micro Single EFX Paparazzi, bring the fader down to 0. Provide DC power between 9V and 24V* to the Barrel input connector. The "Power" button should now be red and fading on and off; this indicates that the dimmer is on standby. Now, connect the load to the Barrel output connector. Be sure you observe current capacities of all components such as cable, connectors, and power supplies and that your load draws 8 amps or less. Using the fader, set the desired brightness. You are now ready to operate your LiteDimmer Micro Single EFX Paparazzi!
- 2) To implement the paparazzi effect, simply tap the "Power" button - and that's it! (Pressing and holding the "Power" button will invoke the paparazzi effect approximately every 1.5 seconds until the "Power" button is released.)

**Note: Power supply voltage must match the rating of the LiteRibbon, or damage may occur.*

Adjust the Fade Out Time:

- 3) The time it takes for the paparazzi flash to fade out can be adjusted. To do this, bring the fader down to 0. Then, press and hold the "Power" button. While holding the power button, move the fader to the desired fade time, as indicated by the series of dots to the right of the fader. The series of five dots

continue-->

(.....) denotes a 1.125-second fade out time (approximately) while the single dot (•) denotes a 48-millisecond** fade out time. The default fade out time as achieved through a factory reset (see below in “Troubleshooting”) is 140 milliseconds.

****Note:** Even if your desired fade out time is 48 milliseconds (fastest), you must move the fader up first and then back down to activate the fade out time edit mode.

Troubleshooting

If LiteDimmer Micro Single EFX Paparazzi stops operating, remove it from the circuit to confirm that the dimmer is the problem. Connect the LiteRibbon directly to power. If it does not operate, the problem may not be the dimmer. Check leads and connectors. If the LiteRibbon does operate, LiteDimmer Micro Single EFX Paparazzi could be overheated due to over-current conditions or is damaged. If damaged, contact the LiteGear Service department for service.

If LiteDimmer Micro Single EFX Paparazzi seems to be experiencing irregular operation, a factory reset may be needed. Resetting the operating system can restore normal operation in many cases. To perform a factory reset, disconnect your dimmer from power, and bring the fader down to 0. Next, press and hold the “Power” button, and then power the dimmer.

After powering the dimmer, release the “Power” button. (The “Power” button should now be flashing on and off.) With your fader still at 0, tap the “Power” button once to confirm that you wish to reset the dimmer. At this time, cycle the power. Note that your preferences and settings may now have to be reset. (The “Power” button should now be flashing the software version of your dimmer.)

Technical Specifications

SIZE: 4 in. x 1.625 in. x 1.125 in.

WEIGHT: 0.146 lb, 2.336 oz, 66 g.

INPUT: 12/24VDC, (9-24VDC); Input voltage must match load voltage requirements!

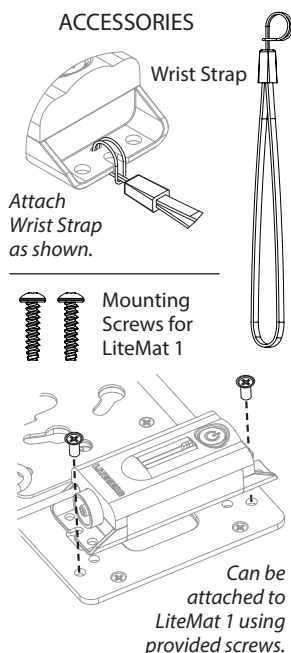
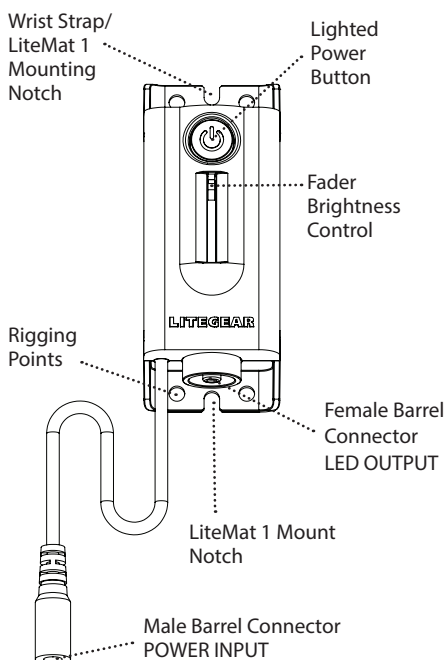
RATING: 8 amps max. total.

WATTAGE: 96 watts max. total at 12VDC; 192 watts max. total at 24VDC.

CONNECTOR: Barrel, 2.1 mm x 5.5 mm.

OUTPUT: DynaRhythmic PWM does not provide “current limiting.”

For use with LiteGear products only.



As an added convenience for mounting, the LiteDimmer Micro Single EFX Paparazzi features a magnetic base. An adhesive-backed metal plate accessory is included.

Warnings

Stage and Studio Use Only • Dry Location Only • Hazardous Voltage
Risk of Electrical Shock • Disconnect Power Before Servicing • Not For Residential Use
Any questions? Comments? Concerns?
Contact us at +1 818.358.8542 or info@litegear.com.



© 2017 LITEGEAR, INC. All rights reserved.
LiteRibbon® is a registered trademark of LiteGear, Inc.
© 2017 LITEGEAR, INC. All rights reserved.
LiteGear™, LiteMat™, LiteStix™, LitePower™, LiteDimmer™, LiteEFX™,
and E-Control™ are trademarks of LiteGear, Inc.