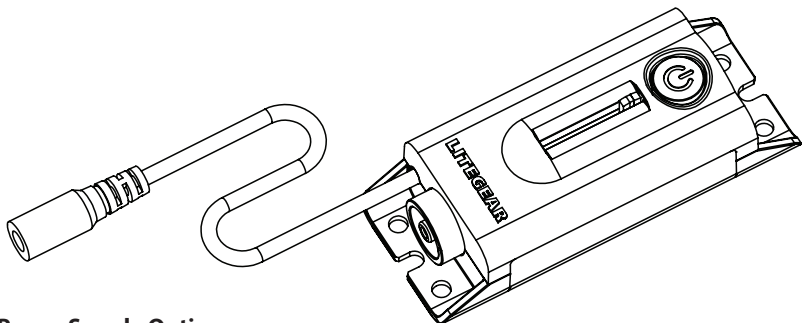




LITEDIMMER™ MICRO SINGLE EFX FIRE

About LiteDimmer Micro Single EFX Fire

LiteDimmer Micro Single EFX Fire is one of our handheld LED effects dimmers. As the most basic of LiteGear's EFX LiteDimmers, it is lightweight and travel-friendly, making it perfect for situations requiring small amounts of single-color LiteRibbon® or simply for those on a budget, providing a realistic fire effect to any job. Its simple yet powerful approach to controlling brightness maintains LiteGear's standard of performance and quality while allowing the kind of flexibility demanded from lighting professionals. LiteDimmer Micro Single EFX Fire is designed for use with LiteGear LEDs that incorporate current limiting for best results. LiteDimmer Micro Single EFX Fire is not designed to limit current. Additional devices may be required.



Power Supply Options

LiteDimmer Micro Single EFX Fire is capable of operating with DC voltages between 9VDC to 24VDC only. It will not increase or decrease input voltage. You must provide voltage that is compatible with the power requirements of LiteRibbon. For best results, use LiteDimmer Micro Single EFX Fire with LiteGear LED products.

Controls

The dimmer is equipped with a fader and a slightly recessed "Power" button.

Connections

LiteDimmer Micro Single EFX Fire is equipped with two 2.1 mm x 5.5 mm Barrel connectors; one is used for input power (male) while the other is for output to the LEDs (female). Barrel polarity is positive (+) in the center, surrounded by a negative (-) shroud.

Safety and Maintenance

Before operation, inspect the cables and enclosure for any damage. Also, inspect the installation for short circuits, damage, water, or similar.

Operation

Start:

- 1) To install LiteDimmer Micro Single EFX Fire, bring the fader down to 0. Provide DC power between 9V and 24V* to the Barrel input connector. The "Power" button should now be flickering; this indicates that the dimmer is active. Tap the "Power" button once to put the dimmer on standby. The "Power" button should now be fading on and off. Now, connect the load to the Barrel output connector. Be sure you observe current capacities of all components such as cable, connectors, and power supplies and that your load is 8 amps or less. You are now ready to operate your LiteDimmer Micro Single EFX Fire.

**Note: Power supply voltage must match the rating of the LiteRibbon, or damage may occur.*

Adjust the "Low" Threshold**:

- 2) With a load connected to the LED output of your LiteDimmer Micro Single EFX Fire unit, you may now tap the "Power" button once to activate the output and bring the fader up from 0 to a desired brightness level. Press and hold the red "Power" button, which will be flickering randomly, for approximately 2 seconds. (The LED load will flash off and then back on once.)
- 3) When the "Power" button is flashing on and off, set the fader to your desired "low" threshold. (This has the effect of setting the output ratio of the fire effect. For example, if you set the low threshold to be 70%, this means that there will always be a maximum of a 30% difference between the brightest part of the effect and the dimmest part of the effect.)
- 4) Press and hold the "Power" button again, for approximately 1 second, to lock this setting. (The LED load will flash off and then back on twice.)

Adjust the Fire "Frequency"***:

- 5) When the "Power" button is flashing on and off, set the fader to your desired "frequency."

continue-->

6) Press and hold the "Power" button again, for approximately 1 second, to lock this setting. (The LED load will flash off and then back on three times.)

Dim the Fire:

7) With all of your settings locked, the fader now controls your master brightness.

*** To achieve a realistic fire effect, the LEDs fluctuate in brightness from a minimum in brightness to a maximum at random intervals. The maximum (or "high" threshold) is determined by the level of the master brightness (see step 7); the minimum (or "low" threshold) can be adjusted to the desired level and then set in place, as discussed in step 2 through step 4. The master brightness maintains the ratio between the low and high threshold.*

**** The fire frequency refers to how quickly the LEDs fluctuate in brightness.*

Troubleshooting

If LiteDimmer Micro Single EFX Fire stops operating, remove it from the circuit to confirm that the dimmer is the problem. Connect the LiteRibbon directly to power. If the LiteRibbon does not operate, the problem may not be the dimmer. Check leads and connectors. If the LiteRibbon does operate, LiteDimmer Micro Single EFX Fire could be overheated due to over-current conditions or is damaged. If damaged, contact the LiteGear Service department for service.

If LiteDimmer Micro Single EFX Fire seems to be experiencing irregular operation, a factory reset may be needed. Resetting the operating system can restore normal operation in many cases. To perform a factory reset, disconnect your dimmer from power, and bring the fader down to 0. Next, press and hold the "Power" button, and then power the dimmer.

After powering the dimmer, release the "Power" button. (The "Power" button should now be flashing on and off.) With your fader still at 0, tap the "Power" button once to confirm that you wish to reset the dimmer. At this time, cycle the power. Note that your preferences and settings may now have to be reset. (The "Power" button should now be flashing the software version of your dimmer.)

Technical Specifications

SIZE: 4 in. x 1.625 in. x 1.125 in.

WEIGHT: 0.146 lb, 2.336 oz, 66 g.

INPUT: 12/24VDC, (9-24VDC); Input voltage must match load voltage requirements!

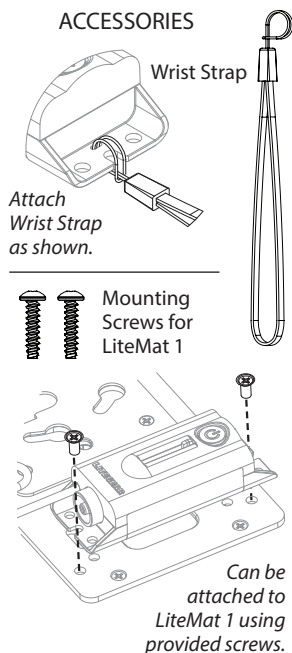
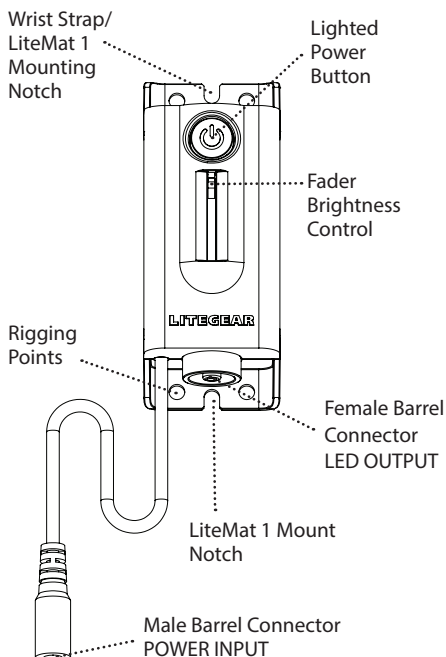
RATING: 8 amps max. total.

WATTAGE: 96 watts max. total at 12VDC; 192 watts max. total at 24VDC.

CONNECTOR: Barrel, 2.1 mm x 5.5 mm.

OUTPUT: DynaRhythmic PWM does not provide "current limiting."

For use with LiteGear products only.



As an added convenience for mounting, the LiteDimmer Micro Single EFX Paparazzi features a magnetic base. An adhesive-backed metal plate accessory is included.

Warnings

Stage and Studio Use Only • Dry Location Only • Hazardous Voltage
Risk of Electrical Shock • Disconnect Power Before Servicing • Not For Residential Use
Any questions? Comments? Concerns?

Contact us at +1 818.358.8542 or info@litegear.com.